



WATERWHEEL BOOSTER STATION

SAWS Job No. 20-6008

SAWS Solicitation No. CO-00407

ADDENDUM NO. 3

March 4, 2021

To Respondent of Record:

This addendum, applicable to work referenced above, is an amendment to the price proposal, plans, and specifications and as such will be a part of and included in the Contract Documents. Acknowledge receipt of this addendum by entering the addendum number and issue date in the space provided in submitted copies of the price proposal.

RESPONSES TO QUESTIONS

QUESTION 1: Please confirm drawing scale on Sheets E4, E5, and E6. This scale implies the pump pad is approximately 12' in width, while Civil drawings show the width to be 95'.

RESPONSE: The civil drawings are correct. Sheets E4, E5, and E6 have been revised to correct the scale, see "Changes to the Plans" number 1.

QUESTION 2: Please confirm the feeder size from Generator to Bypass/Isolation Switch is to be 3-1/C #500 KCMIL. We believe this feeder is undersized according to allowable ampacities of conductors as listed within NFPA 70 NEC.

RESPONSE: Sheet E2 has been revised to show the correct feeder conduit and cable. See "Changes to the Plans" number 2.

QUESTION 3: Please confirm a duct bank is to be run from new Control Building to Generator Slab. Provide any additional conduits or circuits that are required in addition to generator feeder to Bypass/Isolation Switch.

RESPONSE: It is confirmed that the duct bank is to be run from the new control building's bypass/isolation switch to the generator. See attached, revised sheet E2 for revised conduits and cables bypass/isolation switch and ATS is one unit. See attached, revised sheets E2 and E24 for any additional conduits/cables that are required in addition to the generator feeder to bypass/isolation switch.

QUESTION 4: We are getting some questions from partners bidding as prime on this project for the Bid Item #36 – “CPS Costs”. They are looking to us as we are bidding electrical. Please confirm that this bid item will be addressed as an allowance provided in a future addendum.

RESPONSE: This item covers the costs, including the CPS charges incurred by the contractor in paying CPS charges for extending overhead power, pulling wire in contractor installed conduit from the pole to the transformer and setting the transformer. The CPS charges are \$15,499.29. The bid form has been revised to show this line item as an allowance. See “Changes to the Specifications” number 1.

CHANGES TO THE SPECIFICATIONS

1. Replace the Price Proposal in its entirety with the attached corrected version due to a revision in the previous line item 36. Respondents shall use the revised version attached to this Addendum when submitting a proposal for this project. Otherwise, their proposal may be found to be non-responsive.
2. Section IV-1 Request for Competitive Sealed Proposals (RFCSP), Paragraph six (6):

Replace paragraph six (6) as follows: **“Due to the COVID-19 emergency and to protect the health of the public, SAWS is implementing new procedures for the submission of proposals. Proposals will be received electronically only, until 2:00 PM (CT), March 15, 2021.** Electronic proposals will be received via the secure SAWS FTP site. See the Electronic Proposal Opening Instructions attachment for additional information regarding an electronic proposal submittal. Electronic proposals shall be accompanied by a bid bond in an amount not less than five percent of the total proposal price (Or, if providing SAWS with a cashier's check or certified check in an amount not less than five percent of the total proposal price, SAWS will request this within 24 hours from the Respondent who did not submit a bid bond). Proposals will then be publicly opened and read aloud by Contract Administration via WebEx.

The remaining sections shall remain the same.

CHANGES TO THE PLANS

1. Remove and replace sheets E4, E5, and E6, which have been revised to correct the scale.
2. Remove and replace sheets E2 and E24, which have been revised to show the correct feeder conduit and cable.

END ADDENDUM 3

This Addendum, is eleven (11) pages in its entirety.

Attachments:

Revised sheets E2, E4, E5, E6, and E24
Revised Electronic Proposal Opening





Waterwheel Booster Station
Solicitation Number: CO-00407

**ELECTRONIC PROPOSAL OPENING
INSTRUCTIONS**

March 15, 2021 at 2PM (CDT)

FTP PROPOSAL UPLOAD

In order to receive electronic proposals for this project, SAWS will utilize a SAWS secured File Transfer Protocol (FTP) site. Only Respondents submitting as Prime Contractors will need to submit their request prior to **March 12, 2021 by 2:00pm (CDT)** to receive access to the FTP site via email to **Roxanne.Lockhart@saws.org**. Respondent's email shall provide the legal name of the Respondent's company and the intended recipient's email address and phone number. No requests for FTP site access will be accepted after **March 12, 2021 by 2:00pm (CDT)**. Once a Respondent is approved for access, an email with a hyperlink to the FTP site and a unique password for the Respondent will be provided to the Respondent's email recipient.

Once access is received, Respondents may upload the required documents per the Respondent's Proposal Checklist any time before **March 15, 2021 (CDT)**. **Please ensure to allow sufficient time should Respondent's experience technical difficulties in uploading the required documents. No changes to the proposal price can be made once the Proposal has been submitted.**

Respondents shall comply with the following:

- 1) Limit files to three (3) pdf files that includes all items as indicated on the revised Respondent's Proposal Checklist. ONLY 3 SUBMITTALS PER RESPONDENT WILL BE ACCEPTED PER REQUEST. Do not upload zip files.
- 2) Ensure that the itemized General Price Proposal Items is the first page(s) of File 1.
- 3) Respondents may protect the documents from editing by adding a password. **However, the document must be accessible for viewing by SAWS without requiring a password.**
- 4) Files shall be titled as required on the Respondent's Proposal Checklist.
- 5) DO NOT SHARE ACCESS AND/OR PASSWORD WITH OTHER PARTIES OUTSIDE YOUR COMPANY.
- 6) ENSURE THE PROPOSAL IS SENT NO LATER THAN THE DUE DATE AND TIME. PROPOSALS SUBMITTED AFTER THE PROPOSAL OPENING DEADLINE WILL NOT BE ACCEPTED.

If the Respondent is in need of help, they may contact the SAWS Contract Administrator, **Roxanne Lockhart**, at **210-233-3095** or view troubleshooting tips at <http://www.Serv-U.com/sharefiles>

WEBEX PROPOSAL OPENING MEETING

The WebEx meeting details are below if you would like to view the public opening of the proposals.

When it's time, start or join the WebEx meeting from [here](#).

Access Information

Meeting Number: **146 640 6942**

Meeting Password: **tHNpCy82Rj3**

Audio Connection: 210-233-2550 (SAWS WebEx)

If you have any questions or concerns, please feel free to contact me.

Thank you,

Roxanne Lockhart

Contract Administrator

2800 U.S. Highway 281 North, Ste. 171 | San Antonio, TX 78212

Office | 210-233-3095

Email | roxanne.lockhart@saws.org

PRICE PROPOSAL

PROPOSAL OF _____, a
corporation

a partnership consisting of _____

an individual doing business as _____

THE SAN ANTONIO WATER SYSTEM:

Pursuant to Instructions and Request for Competitive Sealed Proposals, the undersigned proposes to furnish all labor and materials as specified and perform the work required for the project as specified, in accordance with the Plans and Specifications for the following prices in the bid proposal to wit:

PLEASE SEE ATTACHED LIST OF BID ITEMS.

RESPONDENT'S SIGNATURE & TITLE

FIRM'S NAME (TYPE OR PRINT)

FIRM'S ADDRESS

FIRM'S PHONE NO. /FAX NO.

FIRM'S EMAIL
ADDRESS

The Contractor herein acknowledges receipt of the following: Addendum Nos. _____

OWNER RESERVES THE RIGHT TO ACCEPT THE OVERALL MOST RESPONSIBLE PROPOSAL.

The Respondent offers to construct the Project in accordance with the Contract Documents for the contract price, and to complete the Project within **250** calendar days after the start date, as set forth in the Authorization to Proceed. **The Respondent understands and accepts the provisions of the contract Documents relating to liquidated damages of the project if not completed on time.**

Complete the additional requirements of the Proposal which are included on the following pages.

Statement on President's Executive Orders

Has your firm previously performed work subject to the President's Executive Orders Numbers 11246 and 11375 or any preceding similar executive orders (Numbers 10925 and 11114)?

Yes No

Quotes					
Line No.	Item Description	Unit	Quantity	Unit Price	Total
Water					
1	Demo Existing Skid Mounted Station	LS	1		
2	Demo Channel and Install Storm Drain	LS	1		
3	Building Pad Preparation	SY	60		
4	Pump Pad Preparation	SY	255		
5	Control Building	LS	1		
6	Control Building HVAC	LS	1		
7	Booster Pump Foundation	LS	1		
8	Hydropneumatic Tank Foundation	LS	1		
9	Hydropneumatic Tank Flatwork	LS	1		
10	Material Haul Off	LS	1		
11	30,000 Gallon Hydropneumatic Tank	LS	1		
12	20" Ductile Iron Pipe	LF	190		
13	16" Ductile Iron Pipe	LF	150		
14	12" Ductile Iron Pipe	LF	20		
15	20" Gate Valve and Box	EA	1		
16	16" Gate Valve and Box	EA	1		
17	12" Gate Valve and Box	EA	5		
18	8" Gate Valve and Box	EA	7		
19	6" Gate Valve and Box	EA	1		
20	Ductile Iron Fittings	Ton	4		
21	Piping Tie-Ins	EA	2		
22	Jockey Pump	EA	1		
23	Medium Booster Pumps	EA	2		
24	Large Booster Pumps	EA	2		

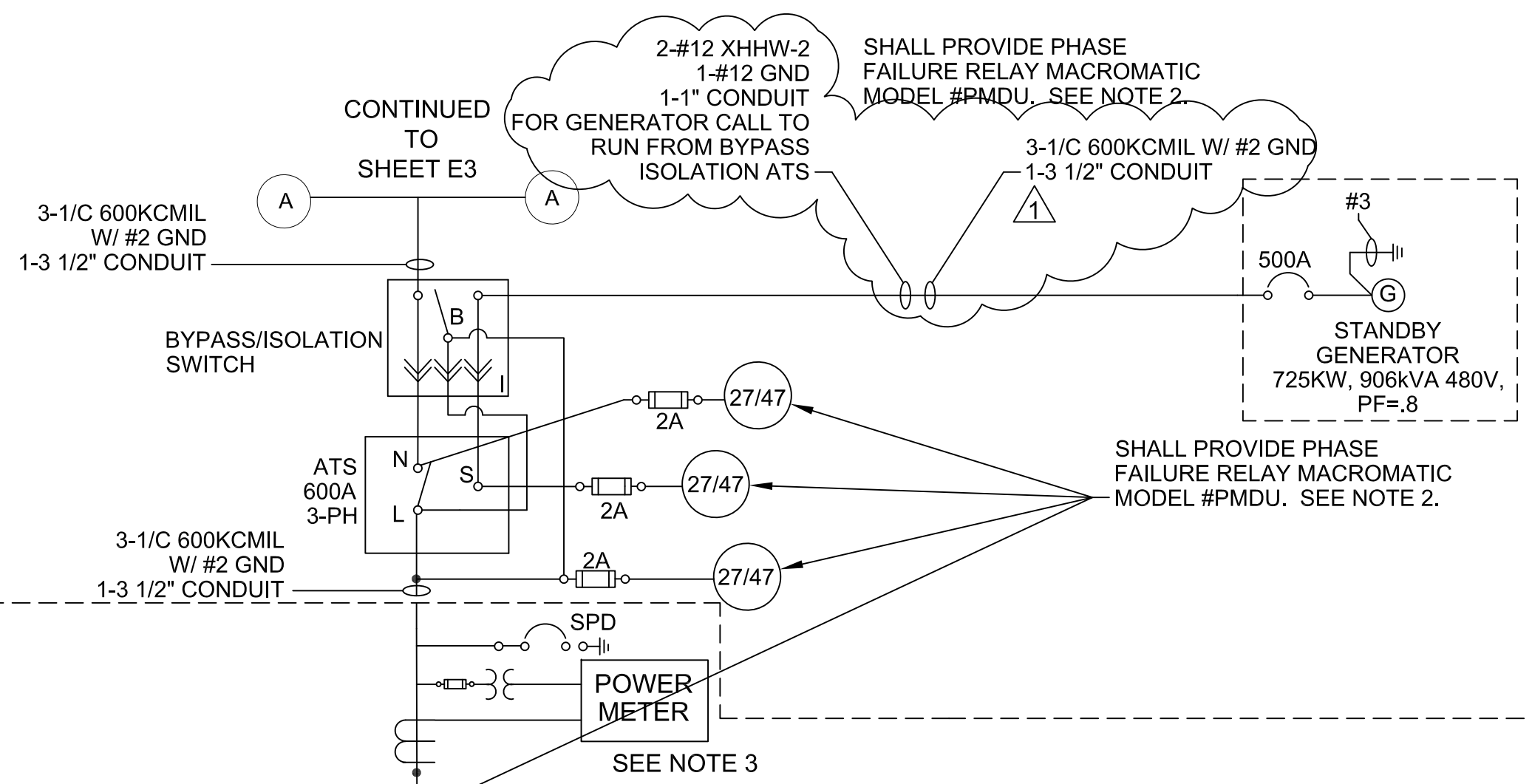
25	Pump Piping (Above Grade), Includes Meters, ARV	LS	1		
26	Surge Valve and Piping	LS	1		
27	Electric Service Equipment	LS	1		
28	Electrical Controls	LS	1		
29	Instrumentation	LS	1		
30	SCADA	LS	1		
31	Misc Electrical (Site Lights, Grounding, Conduits, Vaults, etc.)	LS	1		
32	Air Compressor and Hydro Tank Controls	LS	1		
33	Power Study	LS	1		
34	Comissioning	LS	1		
35	Generator and Foundation	LS	1		
36	CPS Transformer Pad	LS	1		
37	Site Restoration	LS	1		
38	Cathodic Protection and Testing	LS	1		
39	Permitting	LS	1		
40	Material Testing	LS	1		
41	Allowance #1: CPS Costs	LS	1	\$15,499.29	\$15,499.29
SUBTOTAL (ITEMS 1 - 41)					

42	Mobilization	LS	10%		
43	Preparation of Right-of-Way	LS	5%		

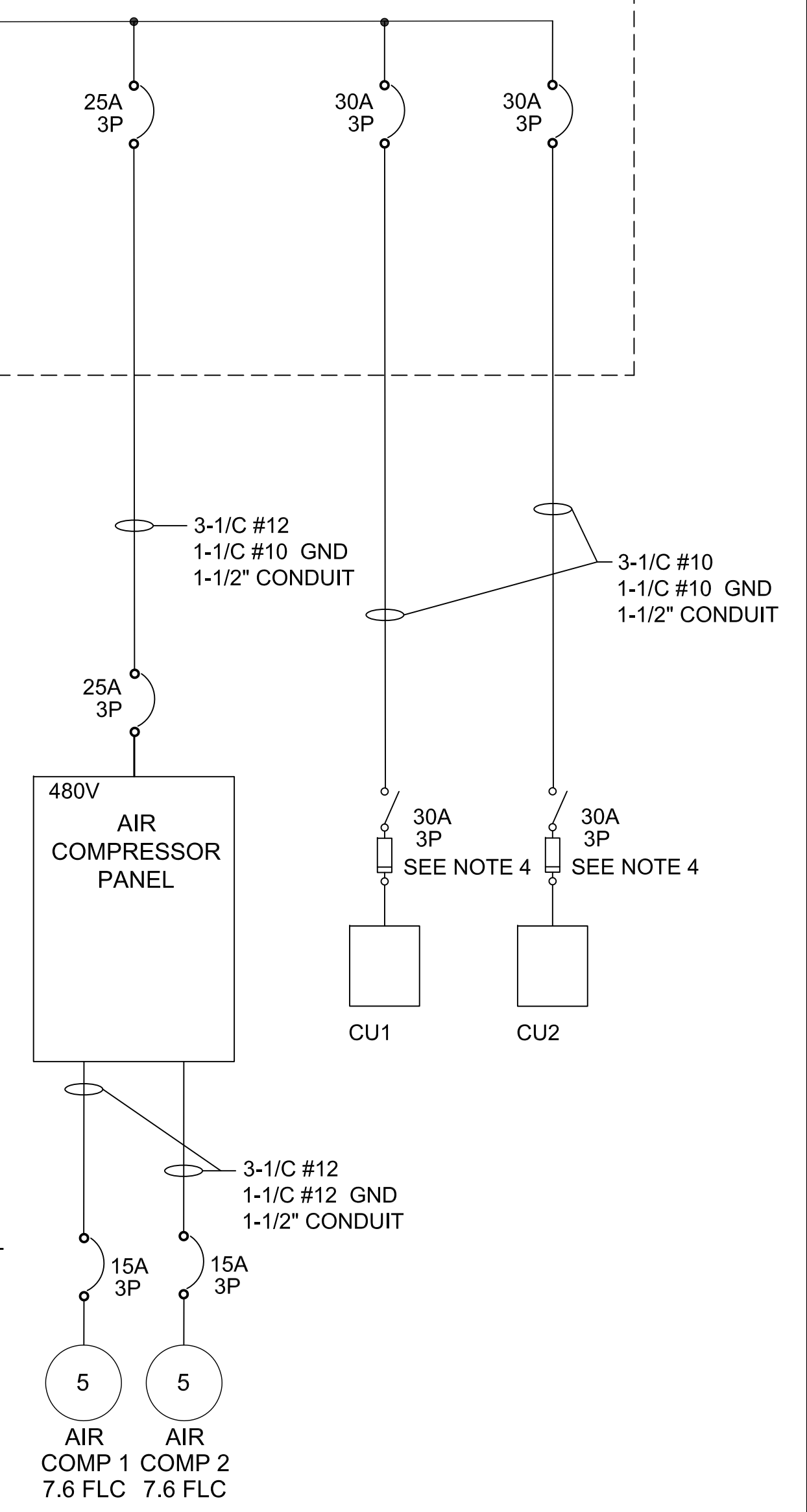
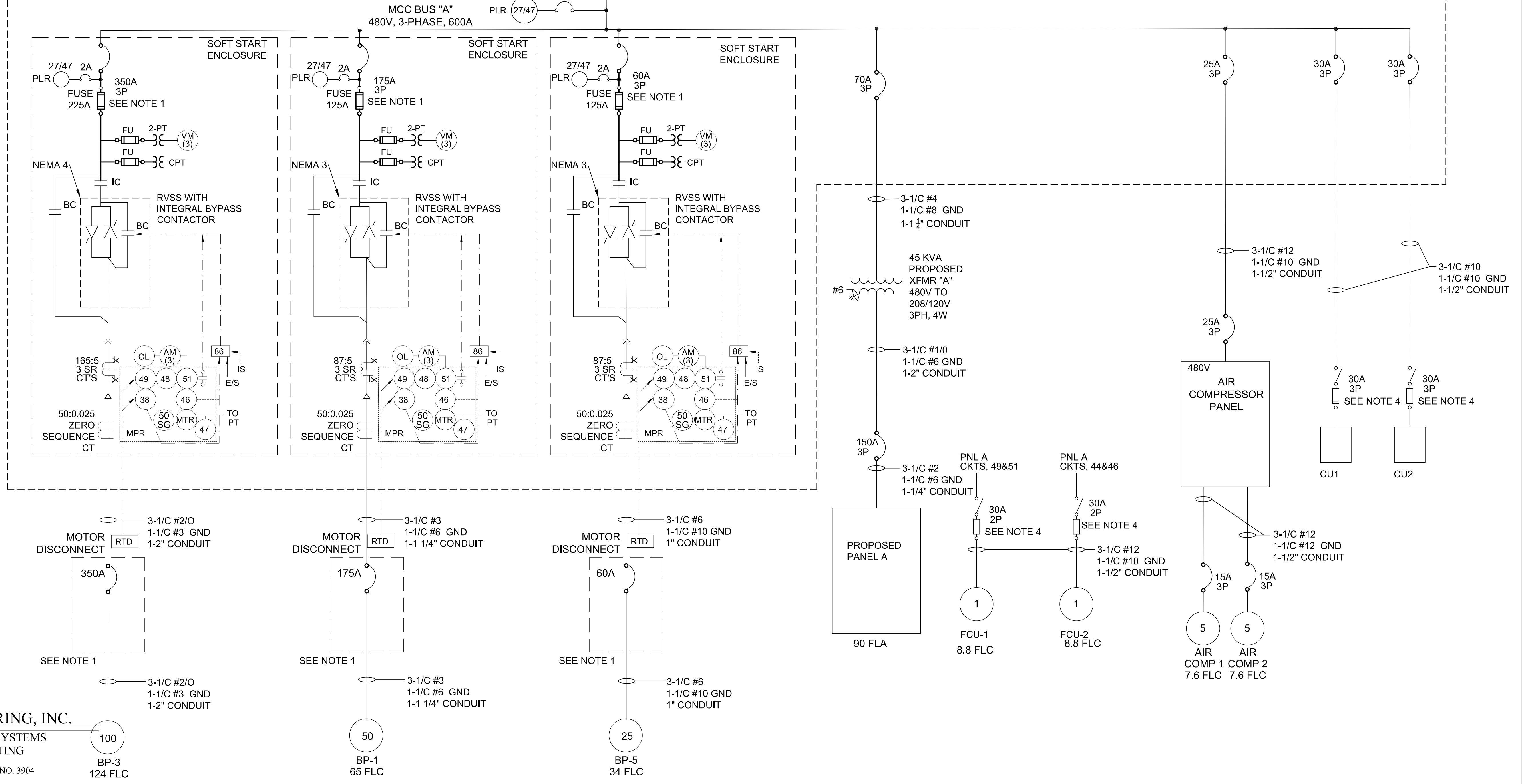
MOBILIZATION AND PREP OF ROW SHALL BE LIMITED TO THE MAXIMUM PERCENTAGE SHOWN. F THE PERCENTAGE WRITTEN EXCEEDS THE ALLOWABLE MAXIMUM STATED FOR MOBILIZATION AND OR PREPARATION OF ROW, SAWS RESERVES THE RIGHT TO CAP THE AMOUNT AT THE PERCENTAGES SHOWN AND ADJUST THE EXTENSIONS OF THE BID ITEMS ACCORDINGLY.

TOTAL BID PRICE (TO INCLUDE LINE ITEMS 1- 43)					
--	--	--	--	--	--

LEGEND	
AS - AMMETER SWITCH	RTD - RESISTIVE TEMP DEVICE
AM - AMMETER	RVSS- REDUCED VOLTAGE SOFT START
ATS - AUTOMATIC TRANSFER SWITCH	SPD - SURGE PROTECTIVE DEVICE
BT - BEARING TEMPERATURE RELAY	SF - SERVICE FACTOR
CD - CAPACITOR TRIP DEVICE	SRCT - SINGLE RATIO CURRENT TRANSFORMER
CPT - CONTROL POWER TRANSFORMER	VM - VOLTMETER
CT - CURRENT TRANSFORMER	VS - VOLTMETER SWITCH
FLC - FULL LOAD CURRENT	27 - UNDERVOLTAGE RELAY
FMR - FEEDER MANAGEMENT RELAY	38 - BEARING RTD
FU - FUSE	46 - REVERSE PHASE OR PHASE BALANCE CURRENT RELAY
G - GENERATOR	47 - PHASE SEQUENCE OR PHASE BALANCE VOLTAGE RELAY
HP - HORSEPOWER	48 - INCOMPLETE SEQUENCE RELAY
HSP - HIGH SERVICE PUMP	49 - THERMAL OVERLOAD RELAY
KI - KEYED MECHANICAL INTERLOCK	50GS - INSTANTANEOUS GROUND SENSOR RELAY
L - LOAD	51 - PHASE OVERCURRENT RELAY
LRA - LOCKED ROTOR AMPS	51N - RESIDUALLY CONNECTED OVERCURRENT RELAY
MPR - MOTOR PROTECTION RELAY	52 - POWER CIRCUIT BREAKER
N - NORMAL	62 - TIME DELAY OPEN
OL - OVERLOADS	59 - OVERVOLTAGE RELAY
PF - POWER FACTOR	83 - AUTOMATIC TRANSFER SWITCH
PT - POTENTIAL TRANSFORMER	86 - LOCKOUT RELAY
PRR - PHASE REVERSAL RELAY	



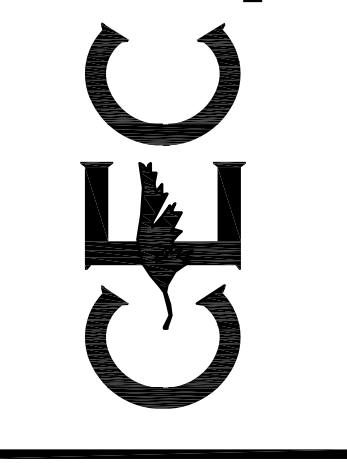
- SHEET NOTES:**
- INVERSE TIME BREAKER, NEC 430.52(C)(1).
 - INSTALL THE THREE (3) PHASE FAILURE RELAYS FOR INCOMING POWER WITHIN THE ATS ENCLOSURE AND ONE (1) PHASE FAILURE RELAY WITHIN THE PUMP CONTROL PANEL. PROVIDE INTERNAL FUSES FOR EACH PHASE FAILURE RELAY.
 - INCOMING LINE POWER MONITORING IS MULTILIN PQM-II.
 - NEC 430.108(C)(1) GENERAL USE SWITCH. CLASS R FUSE, LET-THROUGH CURRENT = 2000.
 - BACK PANEL PROVIDED BY AIR COMPRESSOR PANEL MANUFACTURER.



GRUBB ENGINEERING, INC.
ELECTRICAL POWER SYSTEMS
DESIGN AND TESTING
TBPE FIRM REGISTRATION NO. 3904

DESIGNED BY: MG
DRAWN BY: SG
DATE: 1/5/2021
JOB NO.: E0584608

CIVIL ENGINEERING CONSULTANTS
d.b.a. DON DURDEN, INC.
110 WEST SUIPER BLVD. SUITE 335
SAN ANTONIO, TEXAS 78203-1037
TEL: (210) 641-8969
FAX: (210) 641-8440
REGISTRATION #F-2214 / #10041000

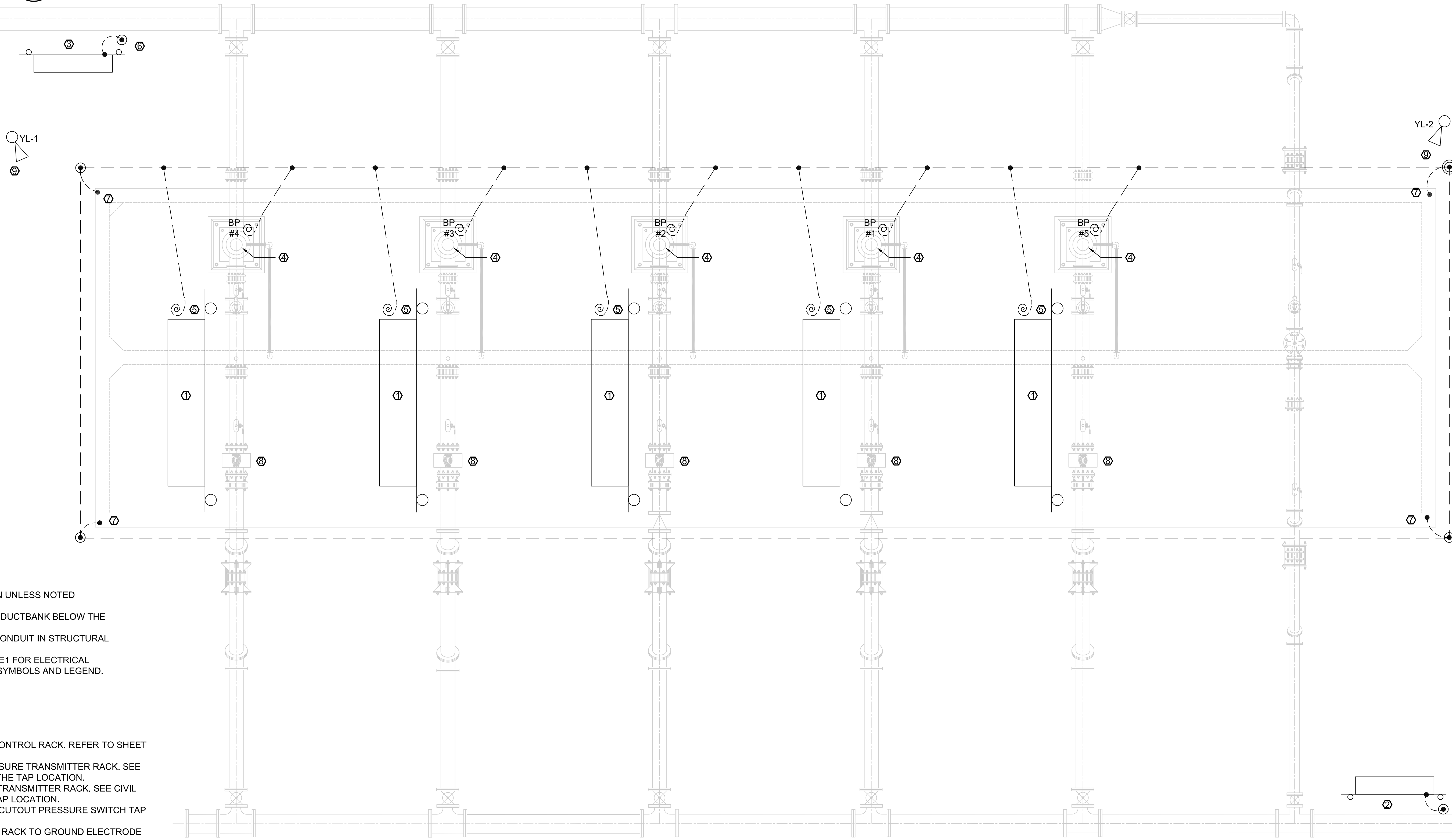
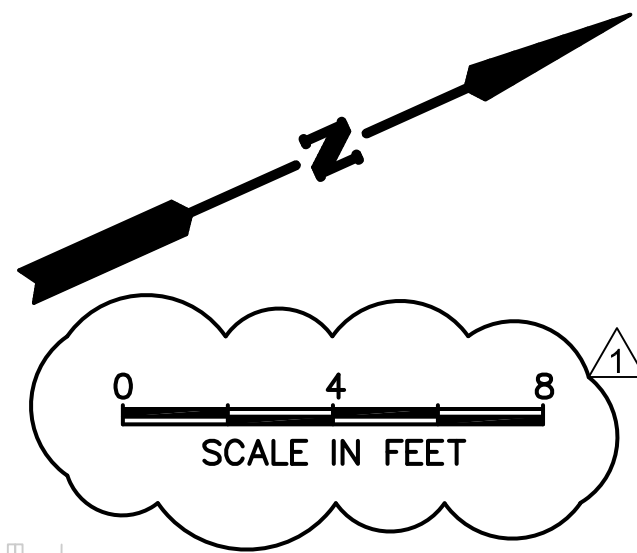


REV	DATE	DESCRIPTION
1	3/3/21	ADDENDUM No. 3

WATERWHEEL SUBD. WATER BOOSTER SYSTEM
ELECTRICAL ONE-LINE MCC A

SHEET NO. **E2**

THIS DOCUMENT HAS BEEN PRODUCED FROM MATERIAL THAT WAS STORED AND/OR TRANSMITTED ELECTRONICALLY AND MAY HAVE BEEN INADVERTENTLY ALTERED. RELY ONLY ON FINAL HARD COPY MATERIALS BEARING THE CONSULTANT'S ORIGINAL SIGNATURE AND SEAL.



SHEET NOTES:

1. CONDUITS SHOWN UNLESS NOTED OTHERWISE ARE ROUTED IN A DUCTBANK BELOW THE CONCRETE SLAB.
2. AVOID ROUTING CONDUIT IN STRUCTURAL FOOTINGS.
3. REFER TO SHEET E1 FOR ELECTRICAL ABBREVIATIONS, SYMBOLS AND LEGEND.

KEYNOTES: X

- ① BOOSTER PUMP CONTROL RACK. REFER TO SHEET E13 FOR DETAILS.
- ② DISCHARGE PRESSURE TRANSMITTER RACK. SEE CIVIL PLANS FOR THE TAP LOCATION.
- ③ INLET PRESSURE TRANSMITTER RACK. SEE CIVIL PLANS FOR THE TAP LOCATION.
- ④ NEW LOW WATER CUTOUT PRESSURE SWITCH TAP ON PUMP CAN.
- ⑤ BOND EQUIPMENT RACK TO GROUND ELECTRODE SYSTEM.
- ⑥ BOND EQUIPMENT RACK TO GROUND ROD.
- ⑦ BOND TO CONCRETE-ENCASED REINFORCING BAR OR ROD.
- ⑧ FLOW METER
- ⑨ NEW CONCRETE BASE POLE MOUNTED LIGHT TO BE INSTALLED. SHEE SHEET E11.

GROUNDING NOTES:

1. GROUNDING SYSTEM IS A SOLIDLY GROUNDING NEUTRAL SYSTEM THAT IS MULTI GROUNDING.
2. THE GROUNDING ELECTRODE IS THE GROUNDING RING FORMED BY THE CONDUCTORS.
3. GROUND WIRE TO BE INSTALLED NOT LESS THAN 30" DEEP.
4. SEE DRAWING E-505 FOR GROUNDING DETAILS.
5. GROUND ROD RESISTANCE TO BE 5 OHMS OR LESS.
6. GROUND RODS THAT PENETRATE THROUGH CONCRETE SLAB SHALL BE ROUTED THROUGH SCHEDULE 80 PVC. PROVIDE PENETRATION CLOSE TO EQUIPMENT ENTRANCE.
7. GROUND RODS TO BE SPACED AT LEAST 20' APART.

GROUNDING LEGEND:

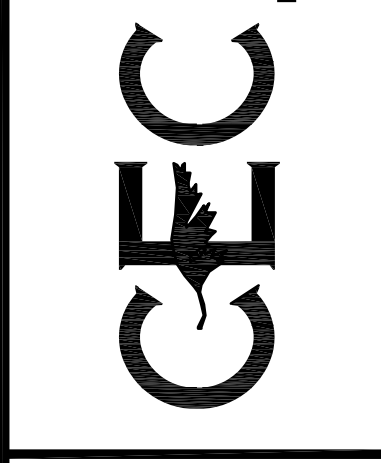
- GROUNDING CONNECTION EXOTHERMIC WELD OR COMPRESSION
- ⌘ GATE FLEXIBLE GROUNDING STRAP.
- ⊙ GROUND ROD CONNECTION 3/4" X 10' LONG.
- ⊙ TEST WELL WITH GROUND ROD CONNECTION 3/4" X 10' LONG
- #2/0 STRANDED BARE COPPER WIRE, SOFT DRAWN AS SHOWN ON PLANS
- ⊙ ABOVE GRADE TAIL FOR EQUIPMENT AND STRUCTURE GROUND CONNECTION. TO BE LOCATED FOR PROPER EQUIPMENT ENTRANCE. PENETRATION THRU CONCRETE TO HAVE SCHEDULE 80 PVC PIPE SEGMENT.

GRUBB ENGINEERING, INC.
ELECTRICAL POWER SYSTEMS
DESIGN AND TESTING
TBPE FIRM REGISTRATION NO. 3904

THIS DOCUMENT HAS BEEN PRODUCED FROM MATERIAL THAT WAS STORED AND/OR TRANSMITTED ELECTRONICALLY AND MAY HAVE BEEN INADEQUATELY ALTERED. RELY ONLY ON FINAL HARD COPY MATERIALS BEARING THE CONSULTANT'S ORIGINAL SIGNATURE AND SEAL.

DESIGNED BY: MG
DRAWN BY: SG
DATE: 1/5/2021
JOB NO.: E0584608

CIVIL ENGINEERING CONSULTANTS
d/b/a DON DURDEN, INC.
15500 HIGHWAY WEST, SUITE 335
SAN ANTONIO, TEXAS 78230-1037
TEL: (210) 641-8989
FAX: (210) 641-8440
REGISTRATION #E-2214 / #10041000



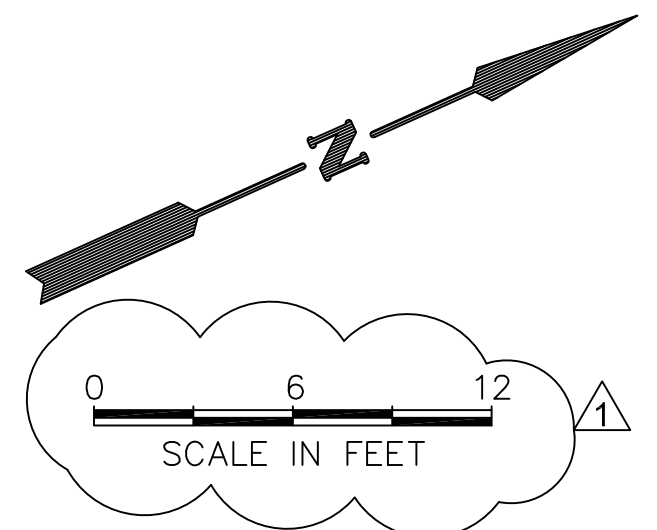
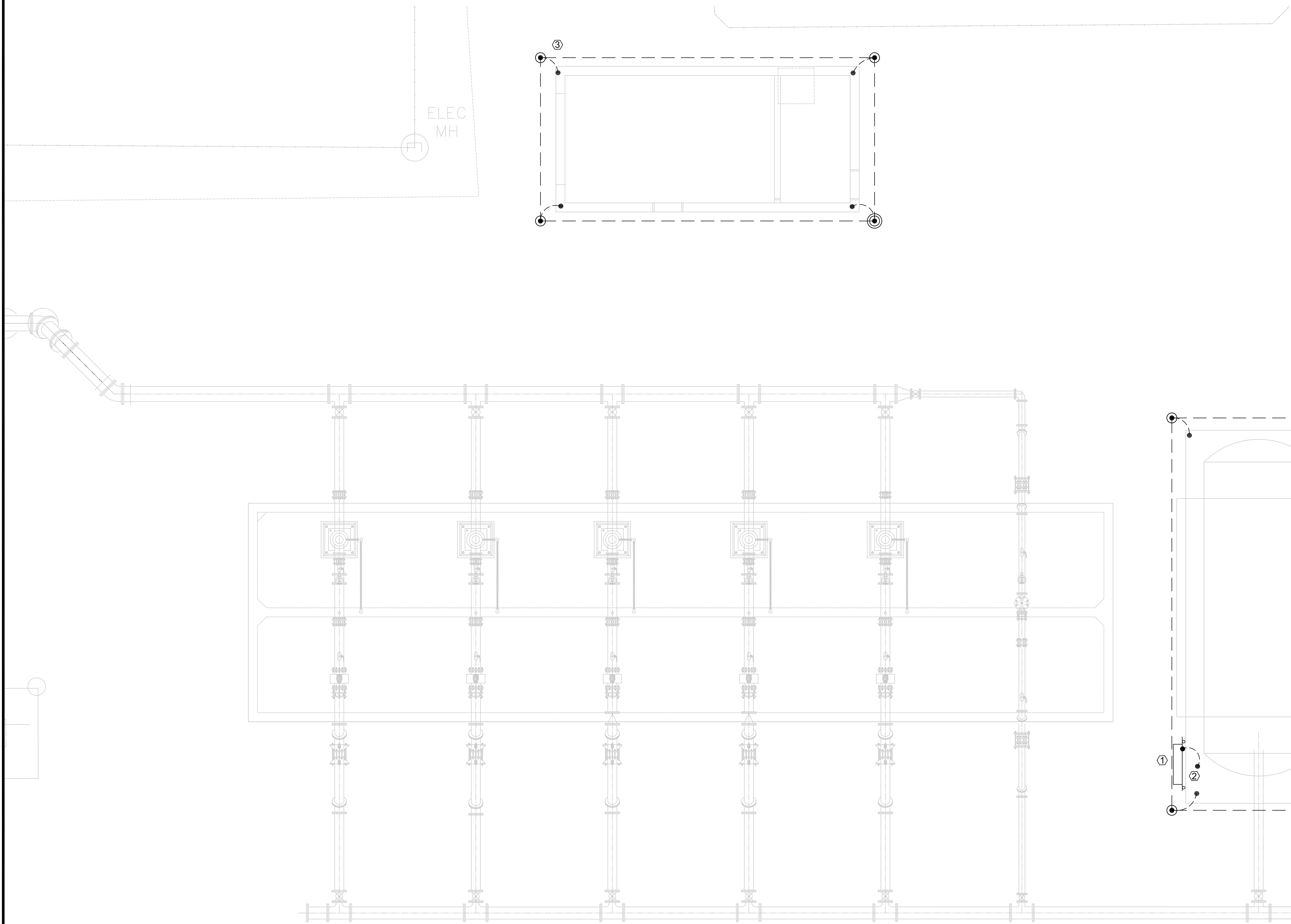
MARCE A. GARD
123462
LICENSED PROFESSIONAL ENGINEER
March 3, 2021

REV	DATE	DESCRIPTION
1	3/3/21	ADDENDUM No. 3

WATERWHEEL SUBD.
WATER BOOSTER SYSTEM
ENLARGED BOOSTER PUMP PLAN -
ELECTRICAL

SHEET NO.
E4

THIS DOCUMENT HAS BEEN PRODUCED FROM MATERIAL THAT WAS STORED AND/OR TRANSMITTED ELECTRONICALLY AND MAY HAVE BEEN INADVERTENTLY ALTERED. RELY ONLY ON FINAL HARD COPY MATERIALS BEARING THE CONSULTANT'S ORIGINAL SIGNATURE AND SEAL.



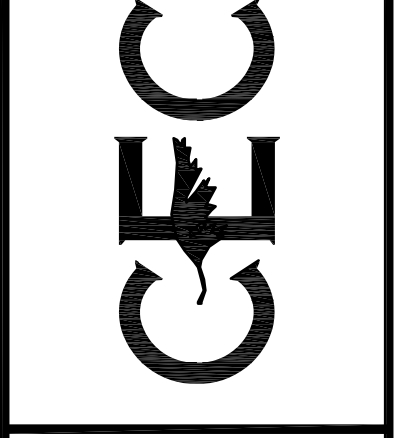
- KEYNOTES: (X)
- ① SURGE TANK INSTRUMENTATION.
 - ② BOND EQUIPMENT RACK TO TANK GROUND ELECTRODE SYSTEM.
 - ③ BOND TO CONCRETE - ENCASED REINFORCING BAR OR ROD.

- GROUNDING LEGEND:**
- GROUNDING CONNECTION EXOTHERMIC WELD OR COMPRESSION
 - ⌋ GATE FLEXIBLE GROUNDING STRAP.
 - ⊙ GROUND ROD CONNECTION 3/4" X 10' LONG.
 - ⊙ TEST WELL WITH GROUND ROD CONNECTION 3/4" X 10' LONG
 - #2/0 STRANDED BARE COPPER WIRE, SOFT DRAWN AS SHOWN ON PLANS
 - ⊙ ABOVE GRADE TAIL FOR EQUIPMENT AND STRUCTURE GROUND CONNECTION. TO BE LOCATED FOR PROPER EQUIPMENT ENTRANCE. PENETRATION THRU CONCRETE TO HAVE SCHEDULE 80 PVC PIPE SEGMENT.

GRUBB ENGINEERING, INC.
 ELECTRICAL POWER SYSTEMS
 DESIGN AND TESTING
 TBPE FIRM REGISTRATION NO. 3904

DESIGNED BY: MG
 DRAWN BY: SG
 DATE: 1/5/2021
 JOB NO.: E0584608

CIVIL ENGINEERING CONSULTANTS
 dba. DON DURDEN, INC.
 15500 HIGHWAY WEST, SUITE 335
 SAN ANTONIO, TEXAS 78230-1037
 TEL: (210) 641-8989
 FAX: (210) 641-8440
 REGISTRATION #F-2214 / #10041000

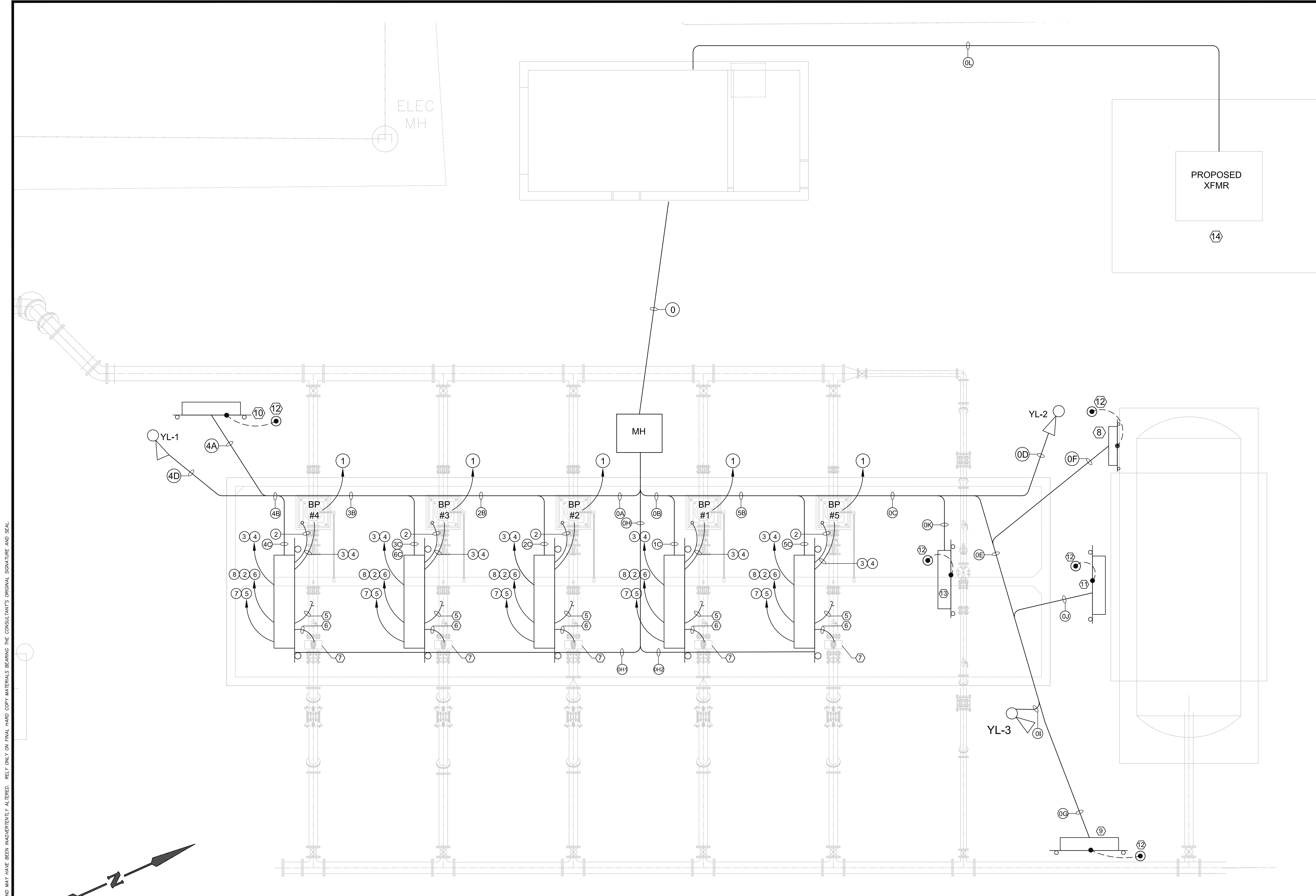


REV	DATE	DESCRIPTION
1	3/3/21	ADDENDUM No. 3

WATERWHEEL SUBD.
WATER BOOSTER SYSTEM
 BOOSTER PUMP STATION GROUNDING
 PLAN

SHEET NO. **E5**

THIS DOCUMENT HAS BEEN PRODUCED FROM MATERIAL THAT WAS STORED AND/OR TRANSMITTED ELECTRONICALLY AND MAY HAVE BEEN INADVERTENTLY ALTERED. RELY ONLY ON FINAL HARD COPY MATERIALS BEARING THE CONSULTANT'S ORIGINAL SIGNATURE AND SEAL.



SHEET NOTES:

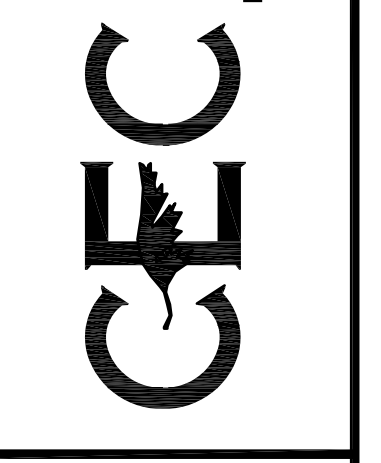
1. CONDUITS SHOWN UNLESS NOTED OTHERWISE ARE ROUTED IN A DUCTBANK BELOW THE CONCRETE SLAB.
2. REFER TO SHEET E-101 FOR LIGHTING IN THIS AREA.
3. AVOID ROUTING CONDUIT IN STRUCTURAL FOOTINGS.
4. REFER TO SHEET E1 FOR ELECTRICAL ABBREVIATIONS, SYMBOLS AND LEGEND.
5. HEAT TRACE TO INSTRUMENTATION/PIPING.
6. MANUFACTURER SUPPLIED CABLE.
7. FLOW SENSOR.
8. PROVIDE MANHOLE WITH HINGED ACCESS HATCH HAVING SPRING ASSIST OPENER.

KEYNOTES: X

5. HEAT TRACE TO INSTRUMENTATION/PIPING.
6. MANUFACTURER SUPPLIED CABLE.
7. FLOW SENSOR.
8. HYDROPNEUMATIC TANK PULL BOX (AIR COMP. RACK)
9. DISCHARGE HEAT TRACE RACK.
10. INLET HEAT TRACE RACK.
11. HYDROPNEUMATIC TANK HEAT TRACE RACK.
12. BOND EQUIPMENT RACK TO GROUND ROD.
13. PRV RACK WITH HEAT TRACE FOR PRV.
14. SEE CIVIL SHEET C9.1 FOR CPS TRANSFORMER PRIMARY DUCT BANK.

DESIGNED BY:	MG
DRAWN BY:	SG
DATE:	1/5/2021
JOB NO.:	E0584608

CIVIL ENGINEERING CONSULTANTS
 dba. DON DURDEN, INC.
 15500 HIGHWAY WEST, SUITE 335
 SAN ANTONIO, TEXAS 78230-1037
 TEL: (210) 641-8989
 FAX: (210) 641-8440
 REGISTRATION #F-2214 / #10041000

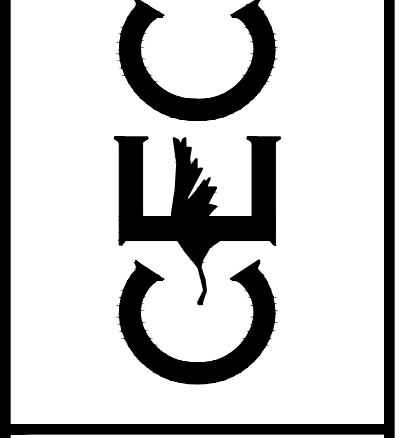
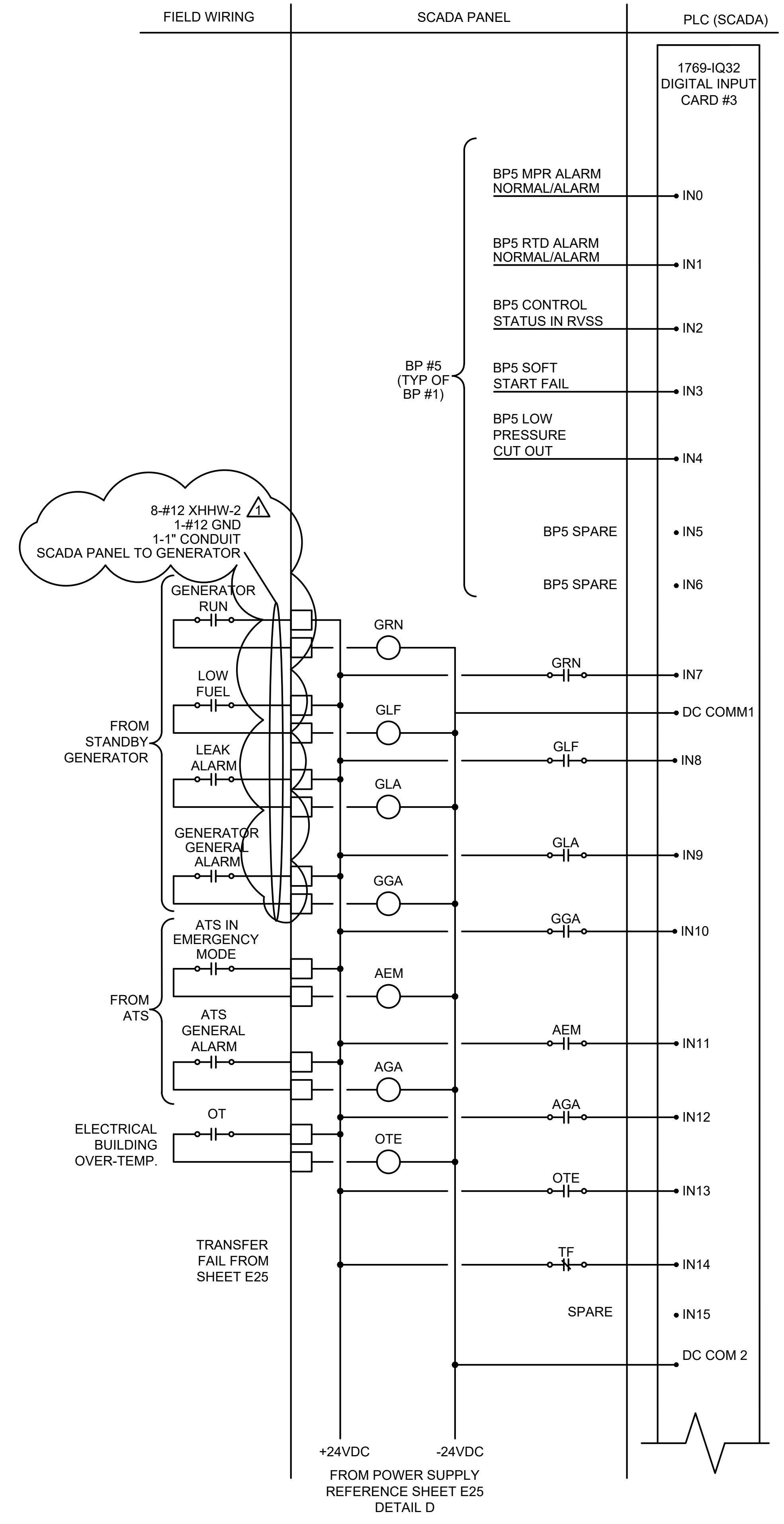
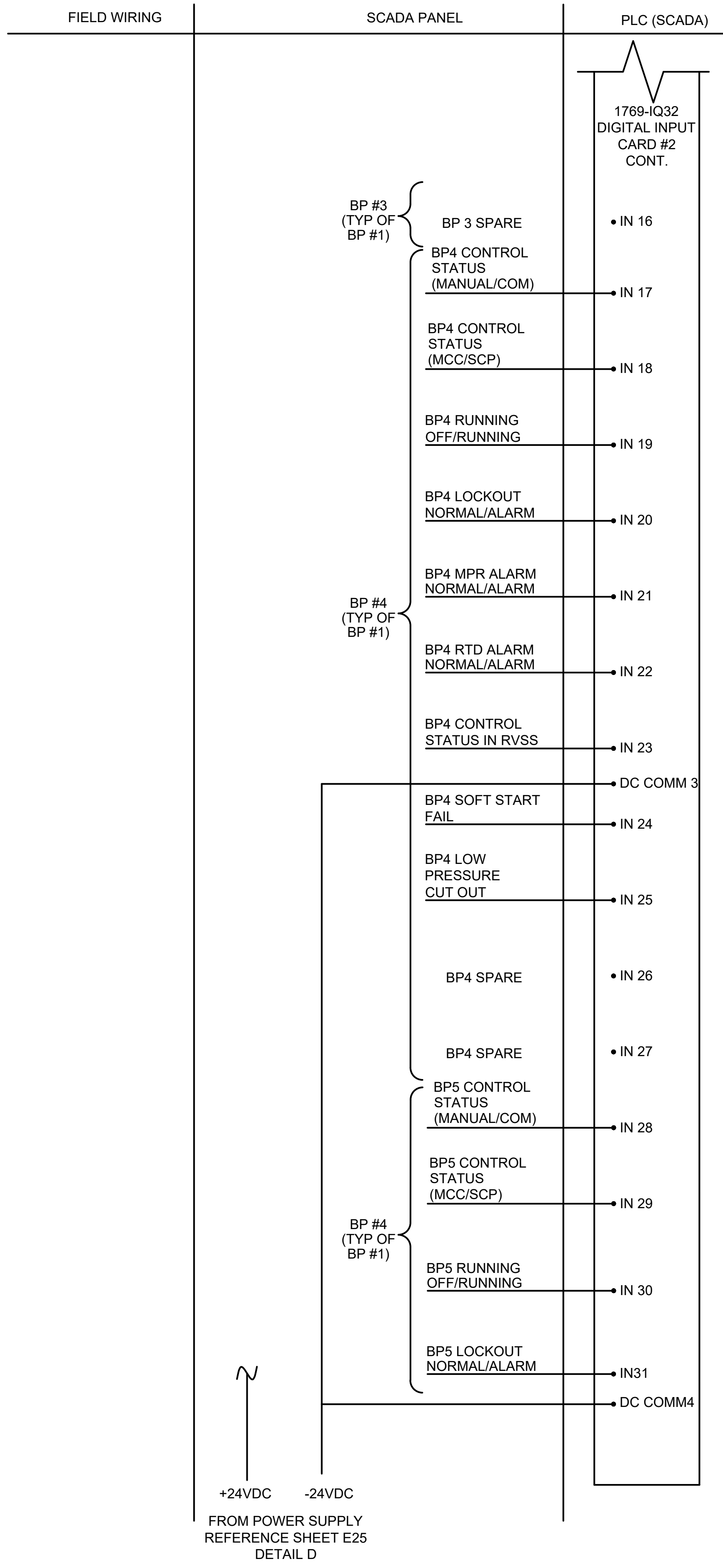
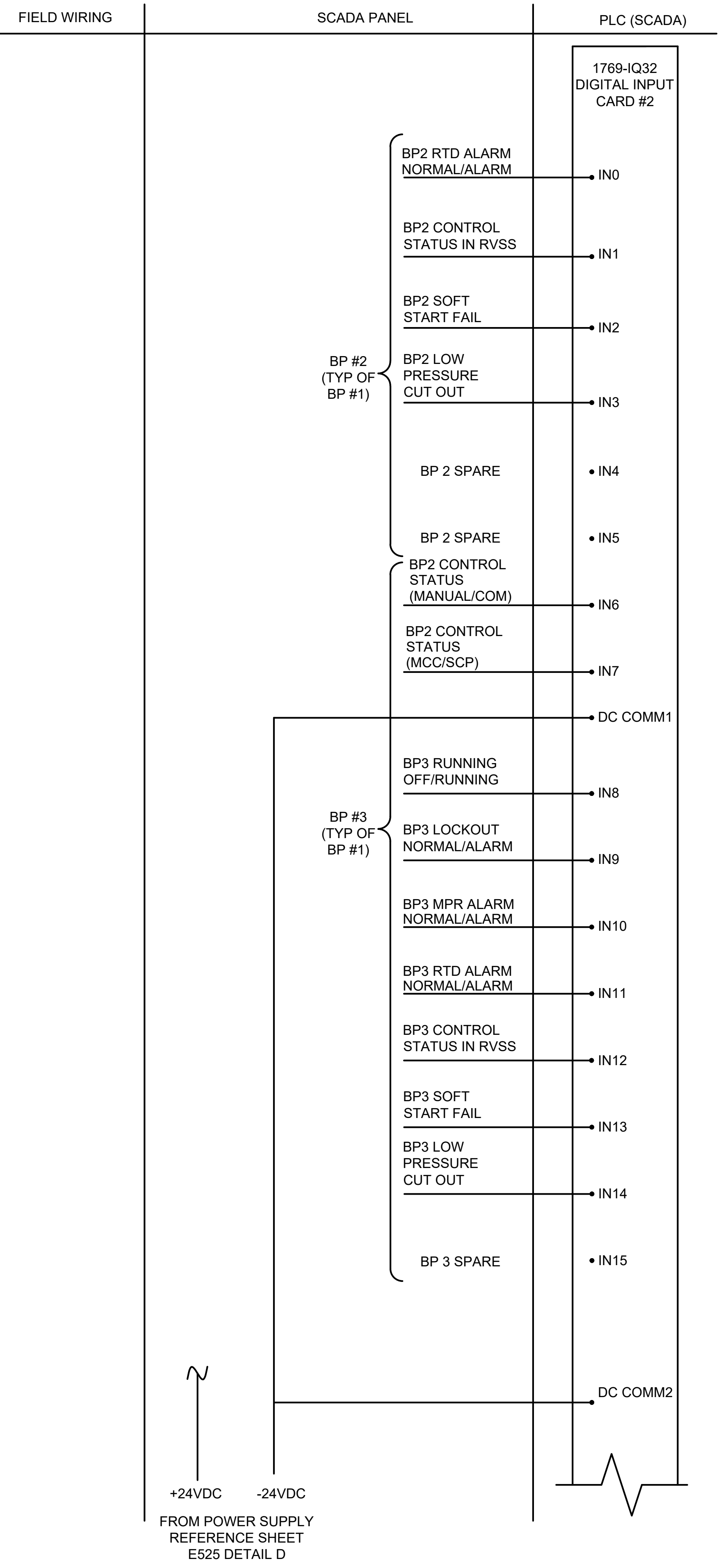


STATE OF TEXAS
 MARSHA A. GAFF
 123462
 LICENSED PROFESSIONAL ENGINEER
 Marsha A. Gaff
 March 3, 2021

REV	DATE	DESCRIPTION
1	3/3/21	ADDENDUM No. 3

WATERWHEEL SUBD.
WATER BOOSTER SYSTEM
 BOOSTER PUMP STATION
 ELECTRICAL PLAN

THIS DOCUMENT HAS BEEN PRODUCED FROM MATERIAL THAT WAS STORED, TRANSMITTED ELECTRONICALLY AND MAY HAVE BEEN INADVERTENTLY ALTERED. RELY ONLY ON FINAL HARD COPY MATERIALS BEARING THE CONSULTANT'S ORIGINAL SIGNATURE AND SEAL.



REV	DATE	DESCRIPTION
1	3/3/21	ADDENDUM No. 3